



ALSTRONG ENTERPRISES INDIA (PVT) LIMITED

OFFICES IN INDIA

DELHI:

E 40/3, Okhla Industrial Area, Phase-II
New Delhi- 110020
Phone: +91 11 43122777
Email: info@alstrongindia.com

MUMBAI:

Unit No. 107, 1st floor,
Town centre II, Near Mittal Estate
Andheri Kuria Road, Saki Naka
Andheri(East), Mumbai- 400059
Email: mumbai@alstrongindia.com

AHMEDABAD:

C/12, Popular estate
Near Aslali Police Station
Aslali, Ahmedabad-382427
Email: ahmedabad@alstrongindia.com

BANGALORE:

Site No. 39, Byatarayanapura,
New Timber Yard Layout, Off Mysore Road,
Bangalore- 560026, Karnataka
Email: bangalore@alstrongindia.com

CHENNAI:

41/1, 11th Avenue, Ashok nagar
Above ASKI Computers
Chennai- 600083
Email: chennai@alstrongindia.com

GUWAHATI:

Lalganesh, Lokhra road
Near HP Petrol Pump
Opp. Exide Showroom, Udalbakra,
Guwahati- 781034
Email: guwahati@alstrongindia.com

RAIPUR:

126, 1st Floor, A-Wing, Crystal Arcade
Lodhipara- Shankar Nagar Road
Raipur(C.G.)- 492001
Email: raipur@alstrongindia.com

RANCHI:

Old HB Road, Near Gulmohar,
Shukla Colony Booty Basti Dumardagga,
Ranchi, Jharkhand 835217
Email: ranchi@alstrongindia.com

HYDERABAD:

Plot No. 20, IDA, Balanagar
Hyderabad- 500037
Email: hyderabad@alstrongindia.com

INDORE:

9, United Warehouse Compound
Dewas Naka, Lasudia Mori
A.B. Road, Indore- 452001
Email: indore@alstrongindia.com

JAIPUR:

B- 237 E, Road No. 6D,
VKI Area, Jaipur- 302014
Email: jaipur@alstrongindia.com

KOCHI:

32/1492B & B1, Surabji Road
Behind Indian Oil Petrol Pump
Padiyattom Edappally, Kochi- 682024
Email: kerela@alstrongindia.com

DEHRADUN:

Plot No. 13-B, Khasra
No. 408, Transport Nagar
Sela Khurd, Dehradun-248001
Email: dehradun@alstrongindia.com

PUNE:

3, Survey No. 163,
Gajanan Maharaj Warehouse Co.
Phursungi, Pune- 412308
Email: pune@alstrongindia.com

LUCKNOW:

E-160, Transport Nagar,
Lucknow- 226012
Email: lucknow@alstrongindia.com

MOHALI(ZIRAKPUR):

Behind Mayur hotel
Village Pabhat, Zirakpur,
District- S.A.S Nagar, Mohali-140603
Email: parveen.kumar@alstrongindia.com

KOLKATA:

34, Circus Avenue, Flat No.6
2nd Floor, Kolkata- 700017
Email: kolkata@alstrongindia.com

PATNA:

Plot No-222-2231, Tauzi No-303.
Khasra No-936-946
Near Apollo Burn Hospital,
Dhanki more, Sandal Pur, Alanganj
Patna- 800026 (Bihar)

WORKS 1:

Phase II, lane No.2
SIDCO Industrial Complex
Bari Brahmana, Jammu-181133

WORKS 2:

Unit No. 2 SIDCO Industrial
Growth Centre, Phase II, Samba
Jammu- 184121

OVERSEAS OFFICE:

DUBAI:

Plot no: 61 (D.M. 532-125)
Block: Saih Shuaib 3 (532)
Dubai Industrial Park
(Dubai Industrial City)
Dubai- United Arab Emirates.
Email: dubai@alstrongindia.com

Metal Laminates

For sales and inquiry
1800-102-3838 Toll Free
Info@alstrongindia.com
www.alstrongindia.com



Disclaimer : "Colors shown above may vary from the actual products,customers are requested to refer to actual sample before placing an order.All information,specifications and visual representations contained in the brochure are subjected to change time to time by the company or competent authorities and shall not form part of the offer or contract"

ALSTRONG™
always looks new



ALSTRONG™
always looks new



Alstrong is the largest manufacturer of Aluminium Composite Panels in India. Established in the year 2001, Alstrong is the first company to manufacture Aluminium Composite Panels in India. The Company has plant in Jammu having annual capacity of 65mn sqft, one of the largest in the World. It has Modern Equipment and comprehensive Testing Facility suitable for the Industry.

The company is ISO certified and is accredited as a Green Project by State Pollution Control Board of Jammu & Kashmir. Over 18 years, it has made its mark as a pioneer and has retained its position as a leading player in the market with ACP product, quality and immense customer satisfaction.

Alstrong has recently started the second manufacturing facility in Dubai to meet the growing demand of Middle East & North Africa regions. In addition to a robust distribution network of 600 dealers & 20 warehouses across India. Alstrong is also present in UAE (Dubai, Abu Dhabi, Al Ain, RAK, and Fujairah), Bahrain, Saudi Arabia, Kuwait, Oman, Qatar, Egypt, Chad, Morocco, Algeria and Sudan.

Leading the way. Alstrong products are helping create the vibrant new face of the Indian millennium. We have partnered with leading architects, builders, contractors and fabricators in changing the landscape of the country for the better. Alstrong is driven by its vision of creating rich visual palette through its range of architectural décor material- Aluminium Composite Panels, Metal Laminates, Partition Panels and HPL in FR A2, B1 & B2 as well as normal grades.

We believe that our brief is to create products that help unlock distinctive, long lasting and edgy creativity. Reason, why our products are designed for years of durable, maintenance-free, performance across a variety of demanding environments and help create a visual aesthetic that "always looks new". A promise vividly fulfilled across signature landmarks that proudly stand the test of time, and come out with flying colours.

Delivery on time is our unswerving motto. Alstrong products reach you amazingly fast, backed by strong network of warehouses, dealers & efficient logistics management across the length and breadth of the country.

Metal Laminates

Applications

- Kitchen Cabinet
- Interior Wall Cladding
- Doors
- Cupboards
- Ceiling
- Furniture
- Table Top
- Bathrooms

Features

- Water proof
- BFT Guard (Borer, Fungus and Termite Proof)
- Washable
- Stain resistant
- Convex or concave bending properties
- Resistant to abrasion
- Easy to install
- Excellent Sound and Thermal Insulation
- No Core gaps
- Reduces labour cost as no Polishing required
- Maintenance free

STANDARD PANEL DIMENSIONS

Sizes	1220 mm x 3660 mm
	1220 mm x 3050 mm
	1220 mm x 2440 mm
THICKNESS	1.5 mm

* To be used for interiors only

PANEL OPTIONS

LENGTH	Upon Request
THICKNESS	Up to 3 mm

Custom colors, Design & grades can be produced on request

Wooden Series



ALVF - 5001



ALVF - 5002



ALVF - 5003



ALVF - 5005



ALVF - 5008



ALVF - 5009



ALVF - 5010



ALVF - 5011

Wooden Series



ALVF - 5013



ALTF - 4012



ALTF - 4013



ALTF - 4015



ALTF - 4016



ALTF - 4021



ALVF - 5004

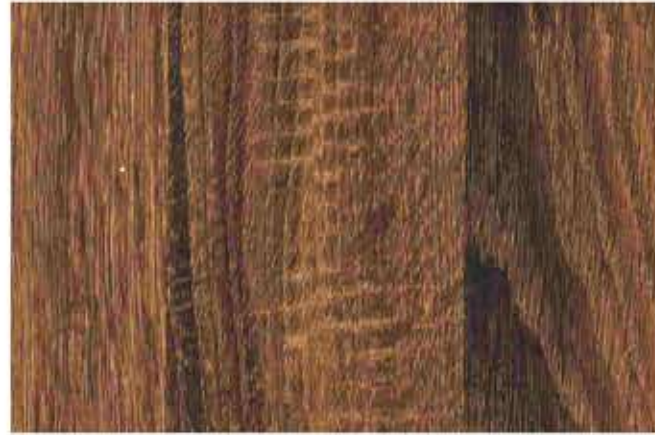


upcoming

Wooden Series



ALTF - 4022



ALVF - 5016



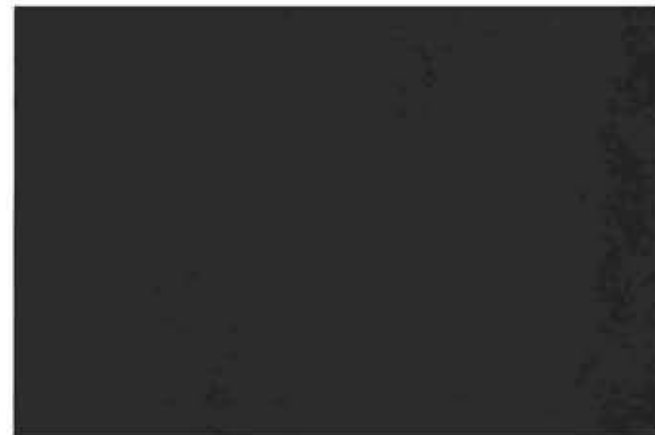
ALVF - 5017



ALVF - 5018



ALVF - 5020



ALVF - 5021



ALVF - 5022



ALVF - 5023

Wooden Series



ALVF - 5030



ALVF - 5031



ALVF - 5032



ALVF - 5034



Embossed Series



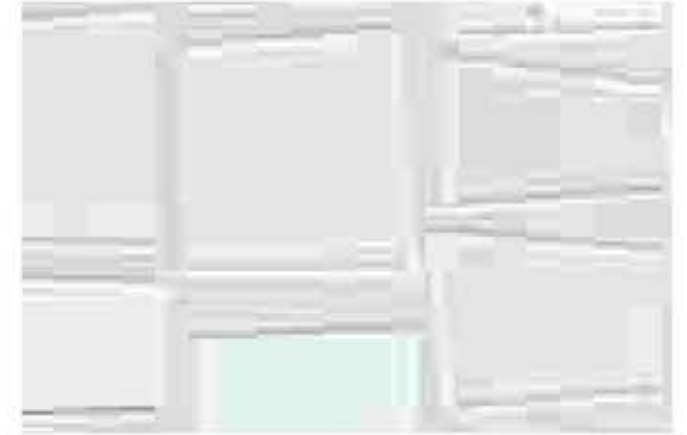
ALTF - 4001



ALTF - 4002



ALTF - 4007



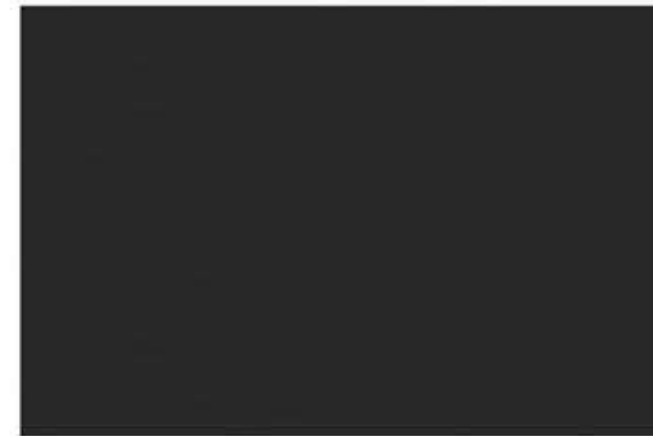
ALTF - 4008



ALTF - 4003



ALTF - 4004



ALTF - 4009



ALTF - 4010



ALTF - 4005



ALTF - 4011



ALCF - 4501



ALTF - 4006



ALCF - 4502



ALCF - 4503

Embossed Series

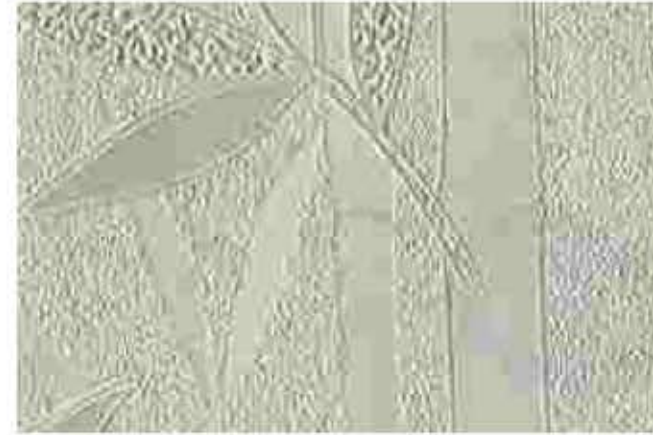
Embossed Series



ALCF - 4504



ALCF - 4505



ALCF - 4511



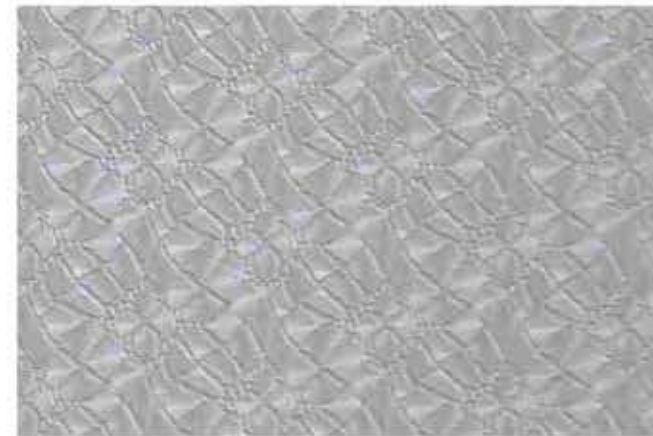
ALCF - 4512



ALCF - 4506



ALCF - 4507



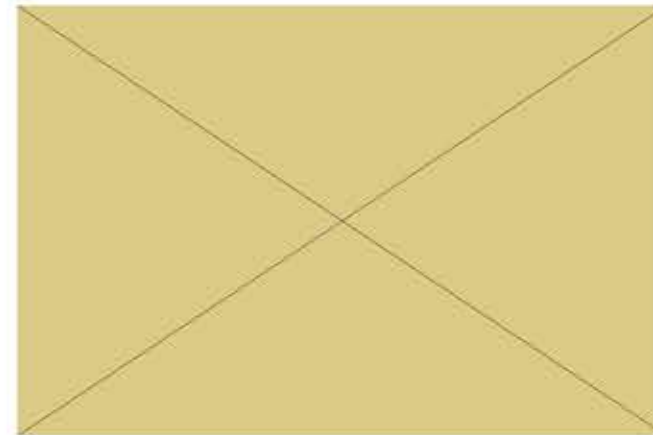
ALCF - 4513



ALCF - 4514



ALCF - 4508



ALCF - 4510

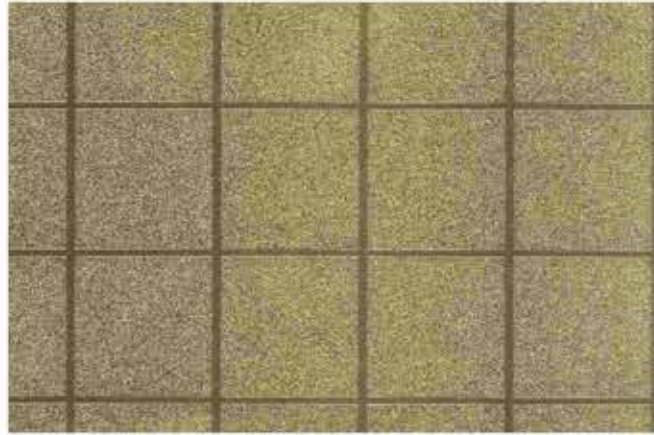


ALCF - 4509

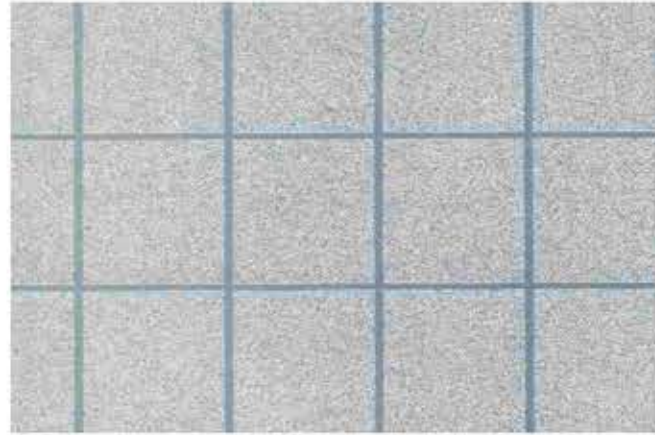


Embossed Series

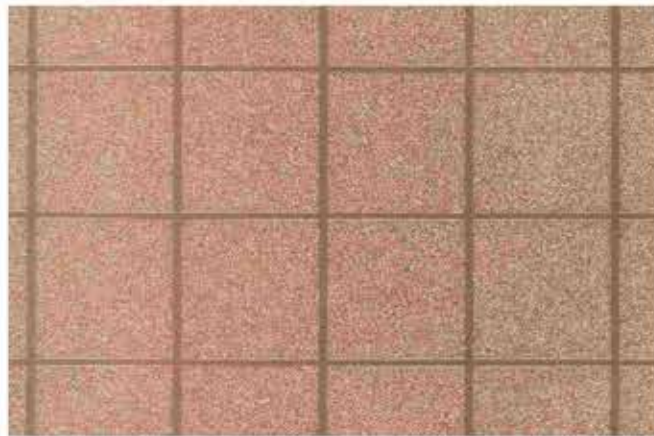
Embossed Series



ALPF - 3001



ALPF - 3002



ALPF - 3004



ALPF - 3007



ALPF - 3008



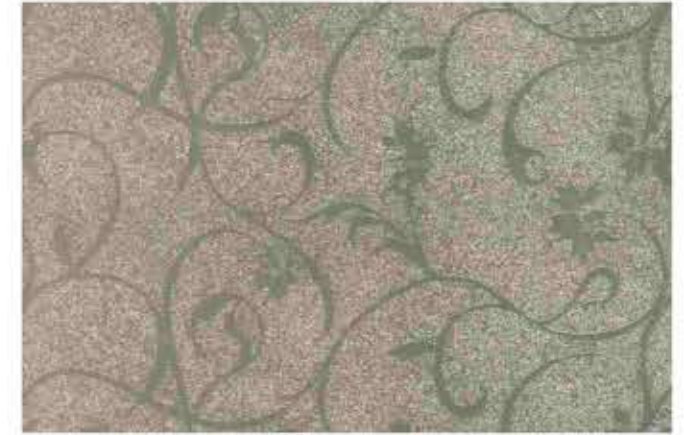
ALPF - 3005



Embossed Series



ALPF - 3011



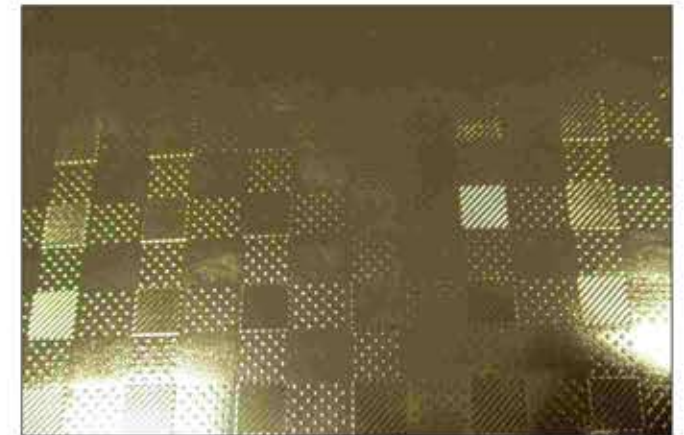
ALPF - 3012



ALPF - 3013



ALPF - 3040



ALPF - 3039



Embossed Series



ALPF - 3042



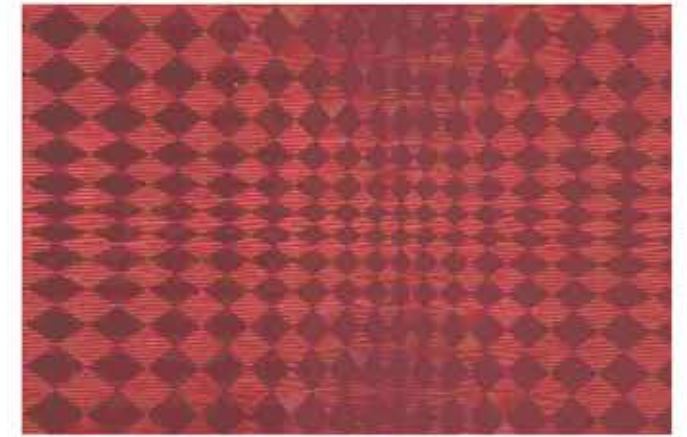
ALPF - 3020



Embossed Series



ALPF - 3019



ALPF - 3021



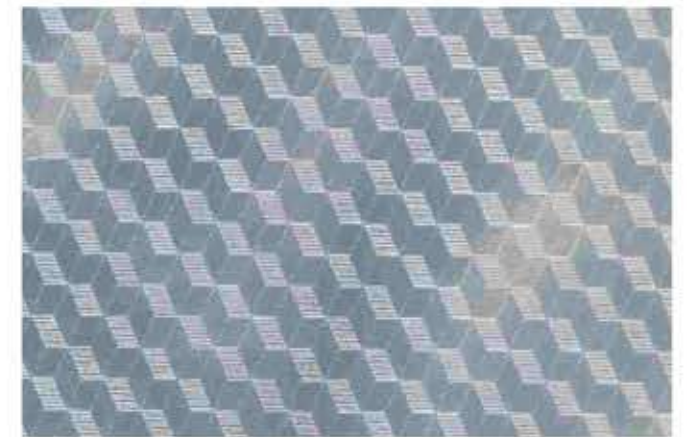
ALPF - 3022



ALPF - 3023



ALPF - 3026



ALPF - 3027



ALPF - 3028



ALPF - 3030

Embossed Series



ALPF - 3044



ALPF - 3045



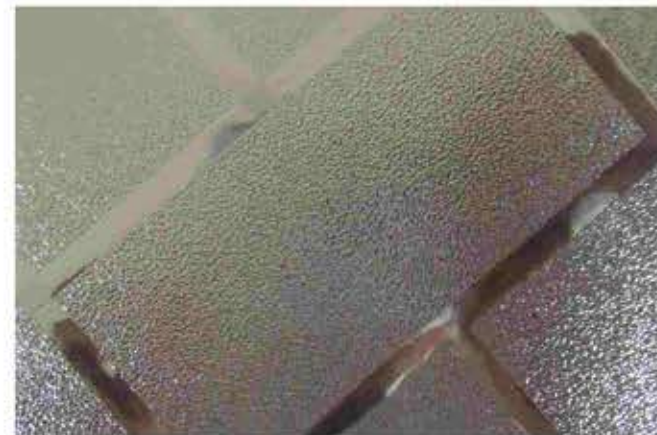
ALPF - 3046



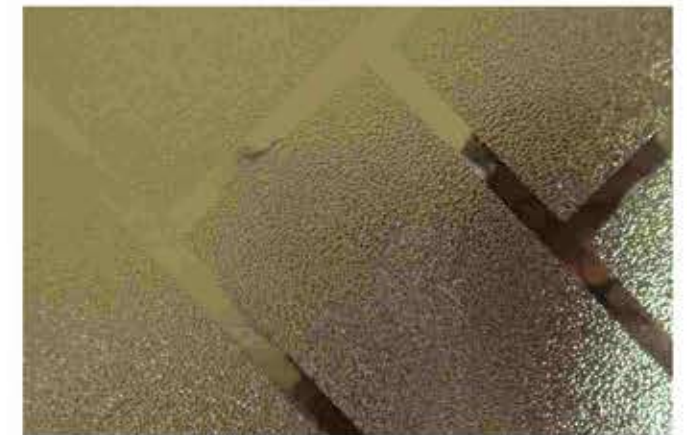
ALPF - 3047



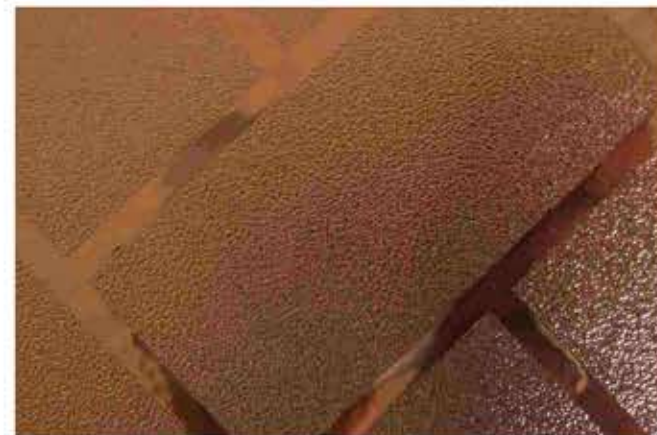
Embossed Series



ALPF - 3048



ALPF - 3050



ALPF - 3049



ALPF - 3051

Embossed Series



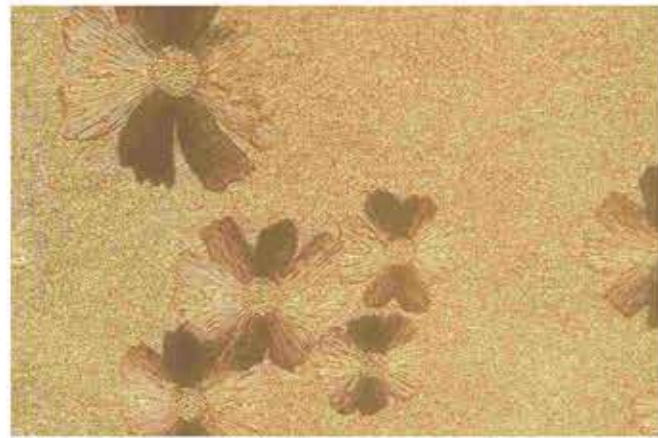
ALPF - 3031



ALPF - 3032



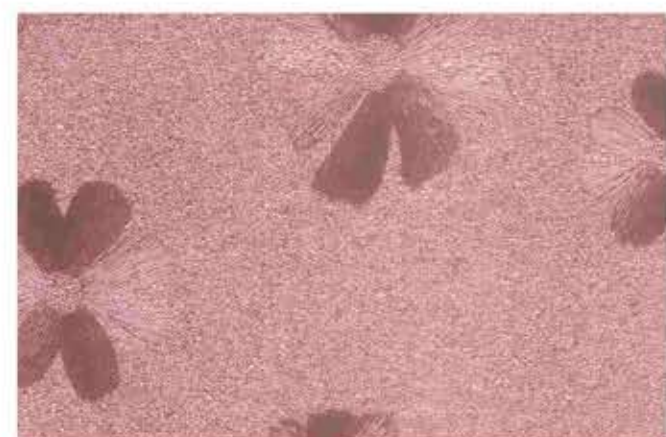
ALPF - 3034



ALPF - 3035



ALPF - 3036



ALPF - 3038

Embossed Series



ALTF - 4014



ALTF - 4017



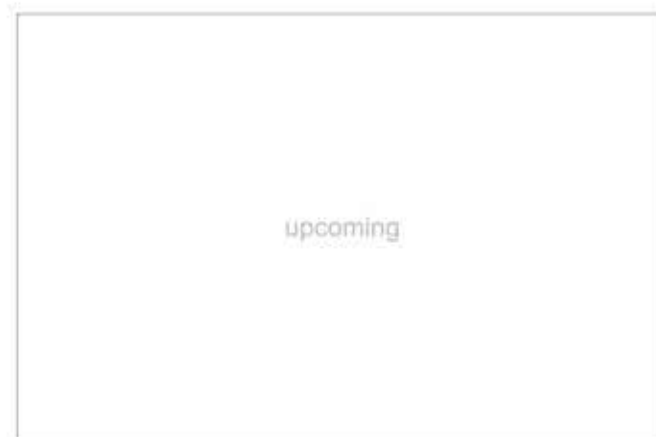
ALTF - 4018



ALTF - 4019



ALTF - 4020



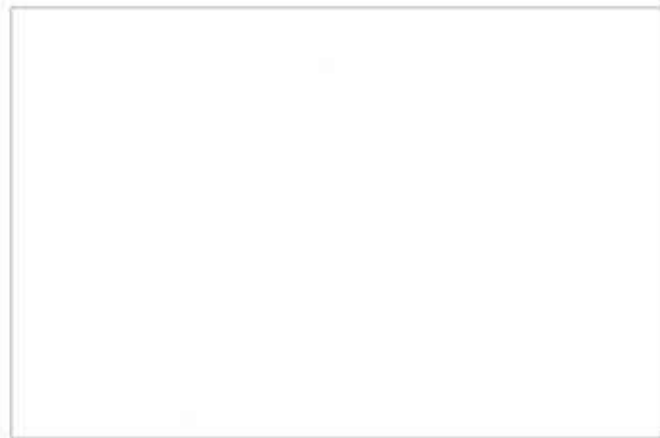
Textured Series



ALVF - 5019



ALVF - 5024



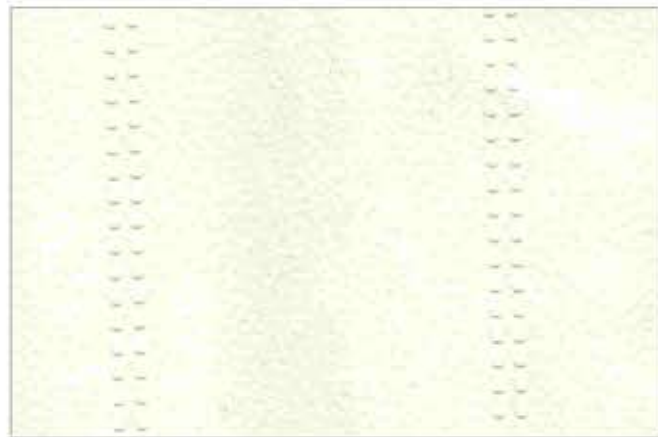
ALVF - 5025



ALVF - 5026



ALVF - 5027



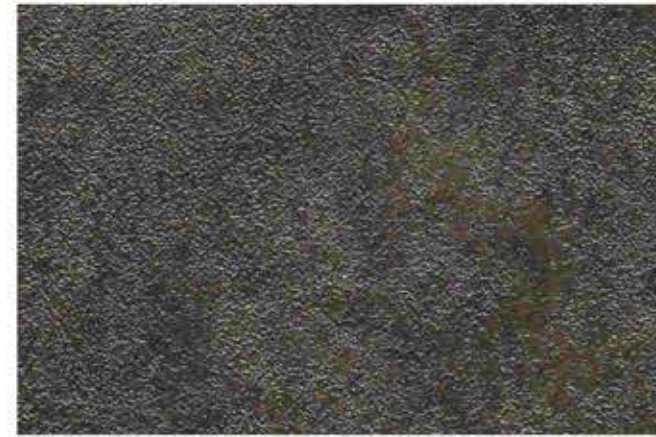
ALVF - 5033



ALVF - 5035



Stucco Series



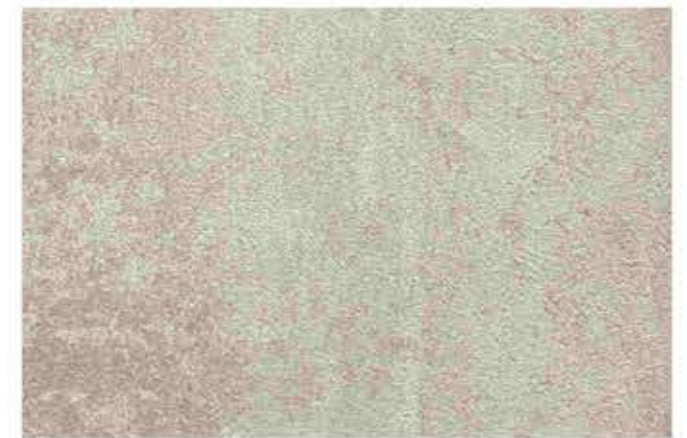
ALVF - 5028



ALVF - 5029



ALVF - 5036



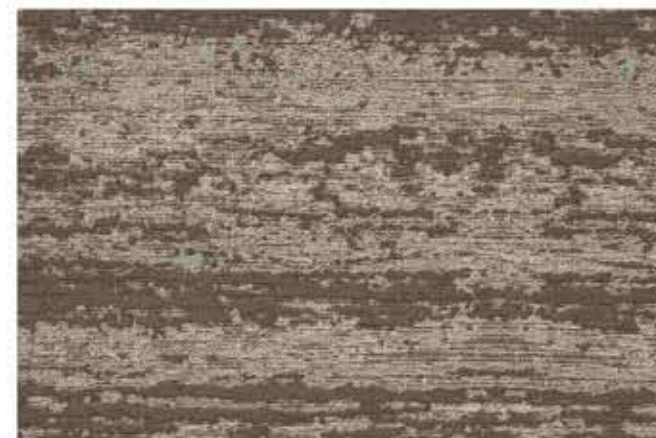
ALVF - 5037



ALVF - 5038



ALVF - 5039



ALVF - 5041



ALVF - 5040